

1. SPECIFICATIONS

AMB-O40J38-1CWH-IP67

01	Sensitivity	-38±3dB (0dB=1V/Pa,1KHz)
02	Standard Operation Voltage	2.0 V
03	Output Impedance	2.2 KΩ
04	Directivity	Omni directional
05	Frequency Range	100 - 10K Hz
06	Max. Operation Voltage	10V
07	Current Consumption	Max.0.5mA
08	Sensitivity Reduction	Within -3dB 0dB=1V/Pa,1KHz Vs=2.0to 1.5V
09	S/N Ratio	≥58dB
10	Sound Pressure Level	110 dB
11	Operating Temperature	-20~+60°C
12	Storage Temperature	-30~+70°C

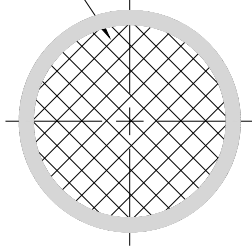
REV NO.

REVISION NOTE

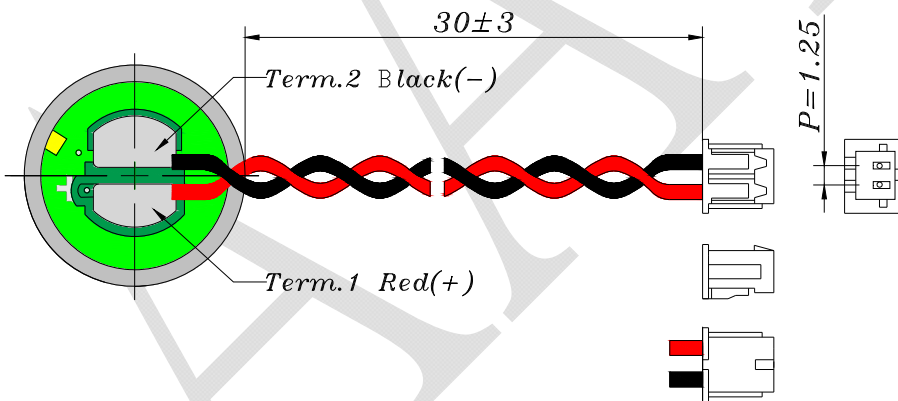
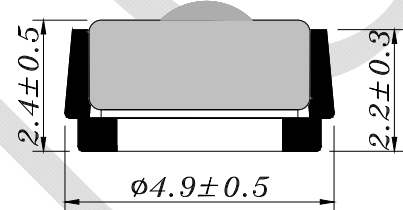
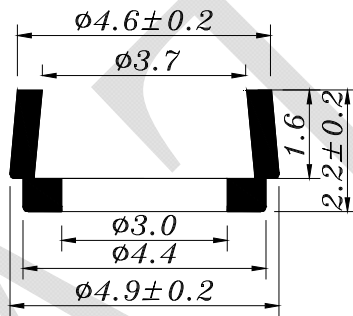
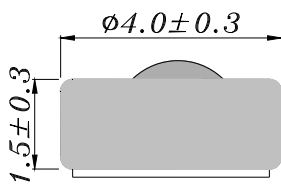
APPROVAL

DATE

Waterproof (White, IP67)



WIRE: UL1571 32# AWG
 Connector : Equivalent to Molex 51021-0200
 Holder: DD-EQ-JTA49-07



RoHS

TITLE: MICROPHONE		DRAWN: <i>Zack</i> 2019/04/09	SCALE: 5:1	SHEET: 1 of 1
PART NO. AMB-040J38-1CWH-IP67		DESIGNED: R & D OF AAT	UNITS: mm	
DWG NO. T4015AL-SMN-D33-M 11009	2 REV	CHECKED:	TOLERANCE ± 0.3	
		APPROVAL:	UNLESS OTHERWISE SPECIFIED: ONE PLACE DECIMAL ± ***	
		MATERIAL: *****	TWO PLACE DECIMAL ± *** THREE PLACE DECIMAL ± ***	



ADVANCED ACOUSTIC TECHNOLOGY CORPORATION

For more information, please contact AATC.

AATC